

# HIKOKI

## ROTARY HAMMER DH45MEY

Item No.	Code No.	Description	No. Used	Remarks
1	337562	FRONT CAP	1	
2	318590	STOPPER RING	1	
3	338155	RETAINER WASHER	1	
4	338154	GRIP	1	
5	339053	RETAINER DAMPER (A)	1	
6A	370669	BIT LOCK HOLDER	1	
7	339051	THRUST PLATE	1	
8	339052	RETAINER SPRING	1	
9	337557	SPRING HOLDER (A)	1	
10	872470	O-RING (S-26)	1	
11	998471	HEX. SOCKET HD. BOLT (W/FLANGE) M5X12	1	
12	338120	CYLINDER CASE COVER	1	
13	318757	RETAINING RING D35	1	
14	321839	RETAINING RING FOR D62 HOLE	1	
15	6007DD	BALL BEARING 6007DDUAV2S	1	
16	321297	BEARING WASHER	1	
17	321301	OIL SEAL	1	
18	338121	CYLINDER CASE	1	
19	991712	HEX. SOCKET HD. BOLT (W/FLANGE) M6X25	4	
20	338142	O-RING (F)	1	
21	338124	RETAINER DAMPER HOLDER	1	
22	338123	RETAINER DAMPER (B)	1	
23	339047	DAMPER SLEEVE	1	
24	338122	RETAINER DAMPER WASHER	1	
25A	370654	BIT LOCK	2	
26	338125	RETAINER SLEEVE	1	
27	313057	NEEDLE PIN D6X6	4	
28	324921	O-RING (C)	1	
29	338126	SECOND HAMMER	1	
30	338127	DAMPER WASHER	1	
31	324923	DAMPER	1	
32	338128	DAMPER HOLDER	1	
33	338129	CYLINDER	1	
34	338133	STRIKER	1	
35	338134	O-RING (E)	1	
36	338136	LOCK SPRING WASHER	1	
37	338130	SPRING HOLDER (B)	1	
38	338137	LOCK SPRING	1	
39A	338135	LOCK SLEEVE	1	
40	338131	CLUTCH SPRING	1	
41	338132	CLUTCH	1	
42	338138	SLEEVE	1	
43	338157	SLIDER	1	
44	338139	METAL (A)	1	
45	338140	METAL WASHER	1	
46	338141	BEVEL GEAR	1	
47	338134	O-RING (E)	1	
48	338147	PISTON	1	
49A	375273	PISTON PIN	1	
50	339049	CONNECTING ROD ASS'Y	1	INCLUD.51
51	335303	NEEDLE BEARING	1	
52	961501	HEX. HD. TAPPING SCREW D5X60	2	
53	944954	BEARING WASHER	1	

\* ALTERNATIVE PARTS

# HIKOKI

## ROTARY HAMMER DH45MEY

Item No.	Code No.	Description	No. Used	Remarks
54	6201VV	BALL BEARING 6201VV	1	
*55	340899	STATOR SENSOR PCB SET 220V-240V	1	
56	338168	HOUSING	1	
57	333225	DUST SEAL	1	
58	338170	TAIL COVER	1	
59	998485	HEX. SOCKET HD. BOLT (W/FLANGE) M5X14	4	
60	6202DD	BALL BEARING 6202DD	1	
61	980700	DUST WASHER (B)	1	
*62	360992	ROTOR	1	
*63	338183	CONTROLLER ASS'Y 220V-240V	1	INCLUD.64-66
64	339056	RUBBER SHEET (C)	1	
65	339055	RUBBER SHEET (A)	4	
66	339057	RUBBER SHEET (D)	1	
67	338184	PANEL ASS'Y	1	INCLUD.65
68	991690	SEAL LOCK HEX. SOCKET HD. BOLT M5X12	2	
69	991711	DISTANCE PIECE (B)	2	
70	338173	HANDLE (A)	1	
*71	338181	FILTER PCB ASS'Y 220V-240V	1	INCLUD.72
72	339058	FILTER PACKING	1	
73	310123	TRANSATORY UNIT	1	
74	310124	HANDLE DAMPER	4	
75	338162	HANDLE DAMPER HOLDER	1	
76	338176	BELLOWS	1	
77	337588	TRIGGER	1	
78	337587	SWITCH	1	
79	338174	HANDLE (B)	1	
80	307028	TAPPING SCREW (W/FLANGE) D4X25 (BLACK)	5	
81	958308Z	PILLAR TERMINAL (A)	1	
*82	940778	CORD ARMOR D10.7	1	
83	960266	CORD CLIP	1	
84	984750	TAPPING SCREW (W/FLANGE) D4X16	2	
*85	500390Z	CORD	1	(CORD ARMOR D10.7)
86	338175	HANDLE SHAFT	1	
87	338197	BACK COVER	1	
88	994192	HEX. SOCKET HD. BOLT (W/FLANGE) M5X16	4	
89		NAME PLATE	1	
90	338171	ON LOCK BUTTON	1	
91	338172	ON LOCK SPRING	1	
92	338185	ON LOCK PCB (A) ASS'Y	1	INCLUD.93
93	339059	PACKING (A)	1	
94	330209	SIDE HANDLE	1	
95	337577	WING BOLT	1	
96	949859	ROLL PIN D2X8 (10 PCS.)	1	
97	338166	MOUNT	1	
98	949556	NUT M6 (10 PCS.)	1	
99	333227	HANDLE BOLT	1	
100	338165	BAND	1	
101	949859	ROLL PIN D2X8 (10 PCS.)	1	
102	939540	RETAINING RING FOR D10 SHAFT (10 PCS.)	1	
103	338144	CRANK SHAFT	1	
104	971750	FEATHER KEY 3X3X20	1	
105	948391	RETAINING RING FOR D40 HOLE	1	
106	6203DD	BALL BEARING 6203DDCMPS2L	1	

\* ALTERNATIVE PARTS

# HIKOKI

## ROTARY HAMMER DH45MEY

Item No.	Code No.	Description	No. Used	Remarks
107	996363	O-RING (S-40)	1	
108	878713	CYLINDER O-RING (B)	2	
109	338191	WASHER	2	
110	338195	WEIGHT	1	
111	338179	ON LOCK PCB (B)	1	
112	338192	WEIGHT PIN	1	
113	306061	SEAL LOCK HEX. SOCKET HD. BOLT M5X30	4	
114	338193	LEAF SPRING (A)	2	
115	328906	SPRING HOLDER	2	
116	338190	BASE	1	
117	338194	WEIGHT BUMPER	2	
118	990079	SEAL LOCK HEX. SOCKET HD. BOLT M5X16	2	
119	339050	FELT PACKING (D)	1	
*120B	338161	CRANK COVER	1	
121	338177	HEX. SOCKET HD. BOLT (W/FLANGE) M5X18	4	
122	338159	CHANGE LEVER	1	
123	337567	LEVER SPRING	1	
124	959149	STEEL BALL D4.76 (10 PCS.)	1	
125	878885	O-RING (S-18)	1	
126	338158	LEVER SHAFT HOLDER	1	
127	939547	RETAINING RING FOR D20 SHAFT (10 PCS.)	1	
128	326257	O-RING (I.D 74.5)	1	
129	338156	CHANGE PLATE	1	
130	986940	SEAL LOCK HEX. SOCKET HD. BOLT M6X45	4	
131	324544	FELT PACKING (B)	1	
132	339048	VALVE	1	
133	339054	FELT PACKING (A)	1	
134	338143	CRANK CASE	1	
135	313050	OIL SEAL (A)	1	
136	338178	SLIP CLUTCH ASS'Y	1	INCLUD. 137-148
137	338150	BEVEL PINION	1	
138	944109	FEATHER KEY 3X3X8	1	
139	338151	COLLAR	1	
140	6002DD	BALL BEARING 6002DDCMPS2L	1	
141	313058	WASHER	1	
142	313053	WASHER (A)	1	
143	321281	GEAR HOLDER	1	
144A	331217	NEEDLE	10	
145	321282	SPRING (C)	10	
146	338152	SECOND GEAR	1	
147	321283	SPACER	1	
148	629VVM	BALL BEARING 629VV	1	
149	944525	BEARING WASHER (C)	1	
150	971745	OIL SEAL (A)	1	
151	338145	FIRST GEAR	1	
152	338146	SECOND PINION	1	
153	939299	NEEDLE BEARING (M661)	1	
154	338167	SEAL PACKING	1	
155	321313	SEAL LOCK HEX. SOCKET HD. BOLT M6X22	2	
156	338169	GEAR COVER	1	
157	376576	MOUNT ASS'Y	1	INCLUD. 95-98
158	376575	SIDE HANDLE ASS'Y	1	INCLUD. 94, 99, 100, 157
		STANDARD ACCESSORIES		

\* ALTERNATIVE PARTS

# HIKOKI

## ROTARY HAMMER DH45MEY

Item No.	Code No.	Description	No. Used	Remarks
501	981840	GREASE (A) FOR HAMMER.HAMMER DRILL (30G)	1	
502	339060	CASE (PLASTIC)	1	INCLUD.504
503	971786	STOPPER ROD	1	
504	372113	BUCKLE	2	
		OPTIONAL ACCESSORIES		
601	308471	GREASE FOR HAMMER.HAMMER DRILL (70G)	1	
602	980927	GREASE FOR HAMMER.HAMMER DRILL (500G)	1	
603	320859	SYRINGE (BLOW-OUT BULB TYPE)	1	
604	318085	SYRINGE (BELLOWS TYPE)	1	
605	313448	DRILL BIT (SDS MAX) D16X340	1	
606	313456	DRILL BIT (SDS MAX) D16X540	1	
607	313449	DRILL BIT (SDS MAX) D19X340	1	
608	313457	DRILL BIT (SDS MAX) D19X540	1	
609	313450	DRILL BIT (SDS MAX) D22X320	1	
610	313458	DRILL BIT (SDS MAX) D22X520	1	
611	313451	DRILL BIT (SDS MAX) D25X320	1	
612	313459	DRILL BIT (SDS MAX) D25X520	1	
613	313452	DRILL BIT (SDS MAX) D28X370	1	
614	313460	DRILL BIT (SDS MAX) D28X570	1	
615	313453	DRILL BIT (SDS MAX) D32X370	1	
616	313461	DRILL BIT (SDS MAX) D32X570	1	
617	313454	DRILL BIT (SDS MAX) D38X370	1	
618	313462	DRILL BIT (SDS MAX) D38X570	1	
620	313463	DRILL BIT (SDS MAX) D40X570	1	
625	944477	COTTER	1	
626	313465	ADAPTER (SDS MAX) FOR SDS PLUS SHANK BIT	1	
627	955994	CORE BIT 25MM	1	
628	955995	CORE BIT 29MM	1	
629	955996	CORE BIT 32MM	1	INCLUD.630
630	955997	GUIDE PLATE (FOR CORE BIT 32MM)	1	
631	955998	CORE BIT 35MM	1	INCLUD.632
632	955999	GUIDE PLATE (FOR CORE BIT 35MM)	1	
633	956000	CORE BIT 38MM	1	INCLUD.634
634	956001	GUIDE PLATE (FOR CORE BIT 38MM)	1	
635	955154	CORE BIT 45MM	1	INCLUD.636
636	955166	GUIDE PLATE (FOR CORE BIT 45MM)	1	
637	955155	CORE BIT 54MM	1	INCLUD.638
638	955167	GUIDE PLATE (FOR CORE BIT 54MM)	1	
639	956002	CORE BIT 64MM	1	INCLUD.640
640	956003	GUIDE PLATE (FOR CORE BIT 64MM)	1	
641	955157	CORE BIT 79MM	1	INCLUD.642
642	955168	GUIDE PLATE (FOR CORE BIT 79MM)	1	
643	956004	CORE BIT 94MM	1	INCLUD.644
644	956005	GUIDE PLATE (FOR CORE BIT 94MM)	1	
645	955159	CORE BIT 105MM	1	INCLUD.646
646	955169	GUIDE PLATE (FOR CORE BIT 105MM)	1	
647	313466	CORE BIT SHANK (B) SDS MAX D25-35	1	
648	313467	CORE BIT SHANK (A) SDS MAX D38-150	1	
649	956009	CENTER PIN (B) 147L FOR CORE BIT D32-35	1	
650	955165	CENTER PIN (A) 133L FOR CORE BIT D38-150	1	
651	321813	DRILL CHUCK 13VLD-D	1	
652	313468	CHUCK ADAPTER (SDS MAX)	1	
653	303334	CHUCK HANDLE	1	

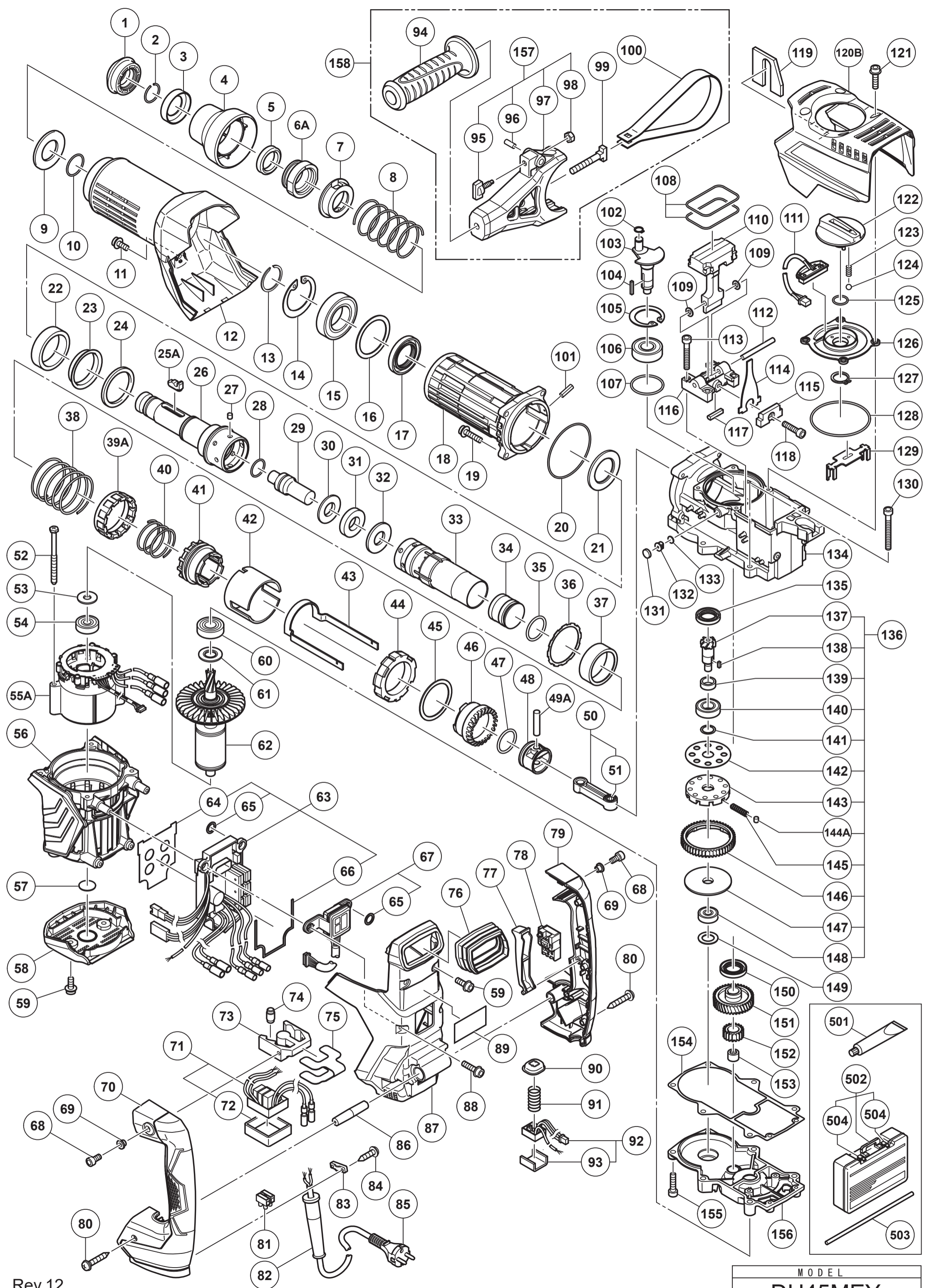
\* ALTERNATIVE PARTS



ROTARY HAMMER DH45MEY

Item No.	Code No.	Description	No. Used	Remarks
654	313469	CHEMICAL ANCHOR ADAPTER (SDS MAX) 12.7MM	1	
655	313470	CHEMICAL ANCHOR ADAPTER (SDS MAX) 19MM	1	
656	313471	BULL POINT (SDS MAX) 280L	1	
657	313472	BULL POINT (SDS MAX) 400L	1	
658	313473	COLD CHISEL (SDS MAX) 280MM	1	
659	313474	COLD CHISEL (SDS MAX) 400MM	1	
660	313475	CUTTER (SDS MAX) W50X400L	1	
661	313476	SCOOP (SDS MAX) 400L	1	
662	313478	RAMMER (SDS MAX) 150MMX150MM	1	
663	313477	BUSHING TOOL (SDS MAX)	1	
664	313479	SHANK (SDS MAX)FOR RAMMER,BUSHING TOOL	1	
665	956006	CORE BIT 120MM	1	INCLUD.666
666	956007	GUIDE PLATE (FOR CORE BIT 120MM)	1	

\* ALTERNATIVE PARTS



Rev.12  
24.12.2021

MODEL  
**DH45MEY**

